

***G R I D  
D R A W I N G  
2***

# GRID DRAWING RECAP

1. Grid drawing is a **technique** that guides you to draw **proportionately**.
2. It involves drawing a measured grid over your **reference photo**, and then drawing a grid of **proportionate ratio on your work surface**.
3. You should then draw the image on your canvas, **focusing on one square at a time**, until the entire image has been transferred.

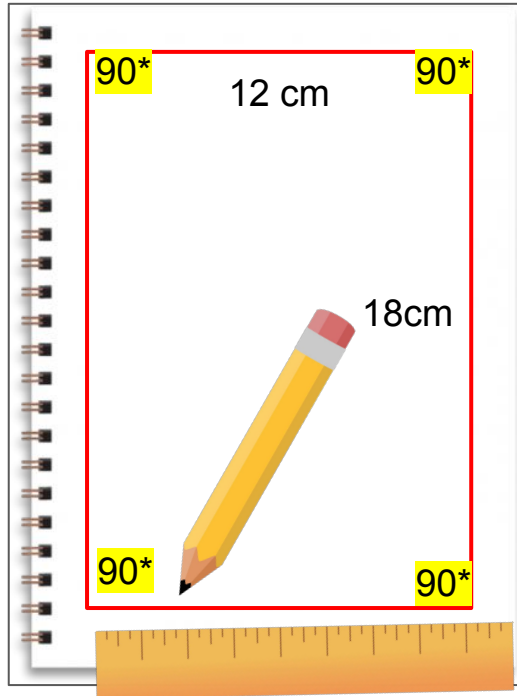


*Drawing grids on reference picture*

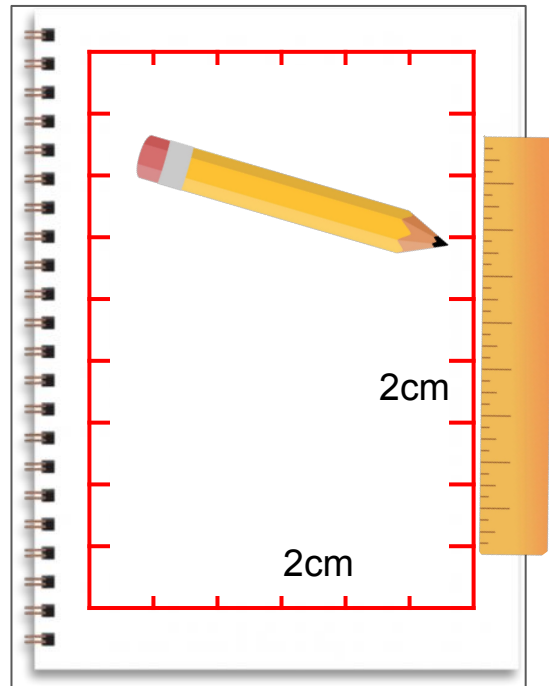


*Drawing grids on reference picture*

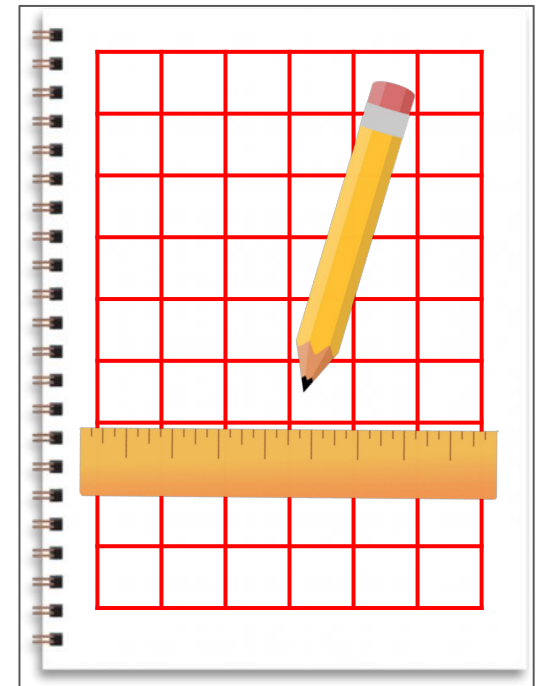
How to draw a grid on blank paper > You will need (1) **HB pencil** (2) Ruler (3) Blank Paper



1) Use your ruler to measure & draw the outer rectangle with a HB pencil, e.g. 18 x 12cm. Ensure a right angle in all 4 corners.



2) Measure the width of the smaller squares and mark them with a short line along all 4 sides of the border. E.g. 2cm.



3) Use the ruler to connect all the short lines together to form parallel horizontal and vertical lines. **You are now ready to start on the grid drawing!**

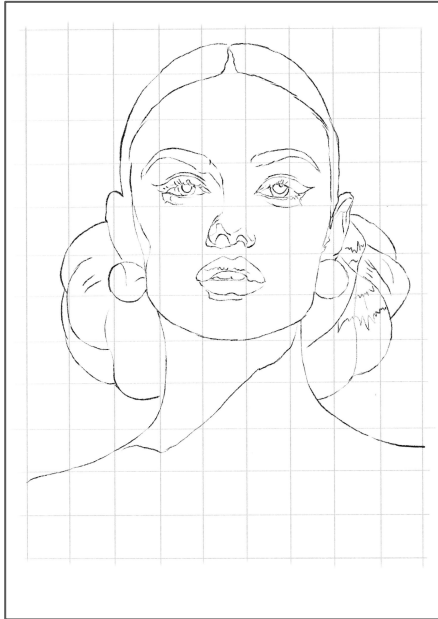


***HBL ASSIGNMENT  
WEEK 9***

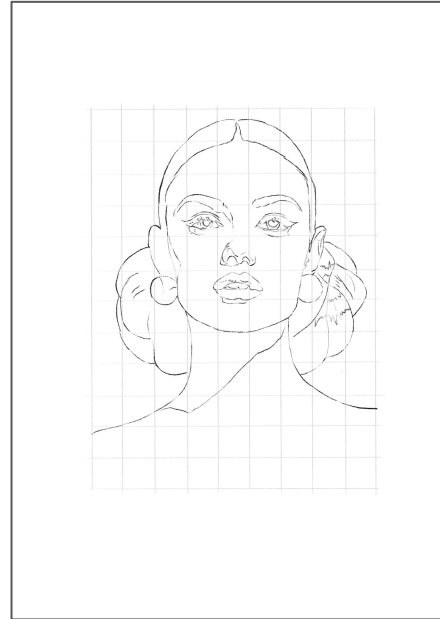
# **T2W9** Assignment

You were tasked to pick 1 out of the 3 options. By today, you should have 2 completed outline drawings. This is how it should look like.

*A4 paper:  
Exact measurements*



*A4 paper:  
½ measurements*





***HBL ASSIGNMENT II***  
***WEEK 10***

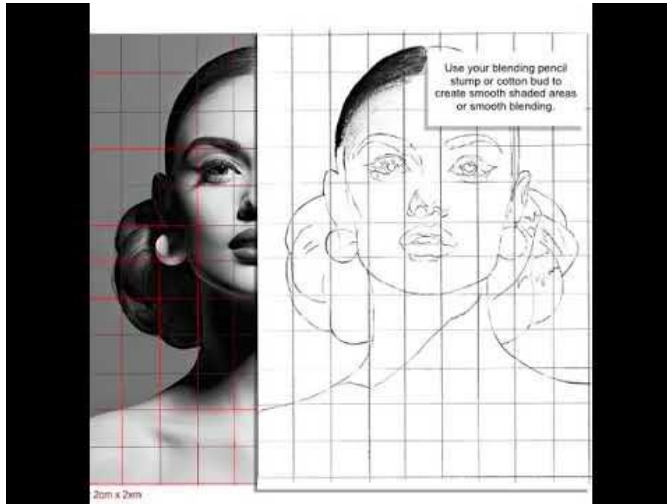
# ***HBL ASSIGNMENT II***

## ***WEEK 10***

1. Using multiple pencils, eraser and pencil blending stump, **render the bigger drawing completely.**
2. Apply the pencil rendering technical skill acquired in T2 to render the image. Make sure **multiple tonal values and details are seen**, ie: highlights, mid tones, shadows.
3. Watch the video in the next slide for a demonstration.
4. **Submit your artworks on Padlet**, according to your class. See next slides for the link.

# *Demonstration*

Watch this video!



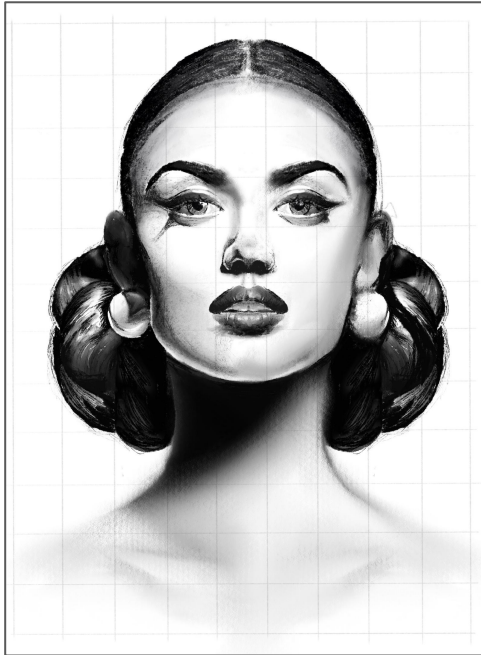
<https://youtu.be/Ro5IBUPosg4>



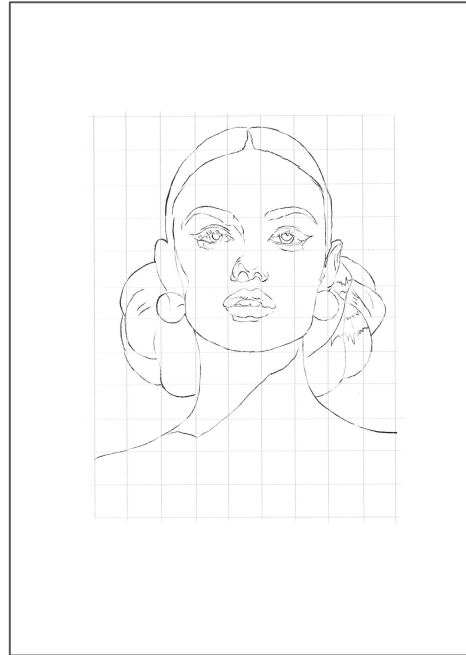
# Submission

1. Take pictures of the 2 final artworks.

*A4 paper:  
Exact measurements  
Completely shaded*

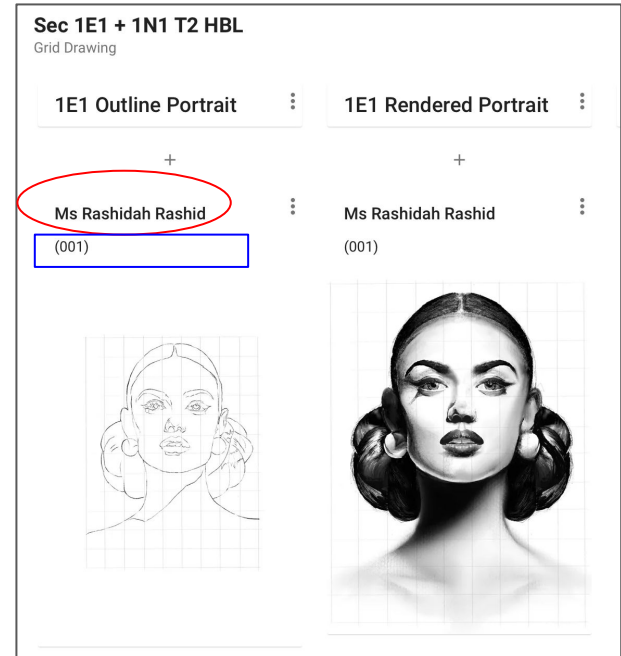


*A4 paper:  
1/2 measurements  
Just outlines*



# Submission

2. Find your class padlet wall & upload both artworks on padlet with this **specific format**.



# ***Submission***

3. Here are the links for your class padlet wall.

1E1 & 1N1 : <http://gg.gg/E1N1ccss>

1E2, 1E3 & 1N2: <http://gg.gg/E2E3N2ccss>

1E4 & 1N3: <http://gg.gg/E4N3ccss>

4. Last day submission for all students is **31st May 2021, 5pm.**