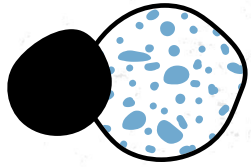


The background is a light, textured white surface. It features several decorative elements: a blue oval with orange scribbles in the top left; a stylized white face with orange spots, a blue eye, and an orange mouth in the top right; a green leaf and a yellow flower in the bottom left; and a rainbow with orange and yellow bands and yellow dashed lines above it in the bottom right. There are also several large, light grey abstract shapes scattered across the page.

# T1U3 Brush Strokes

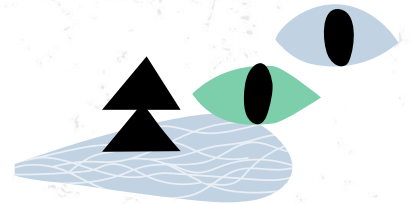
Acrylic Painting

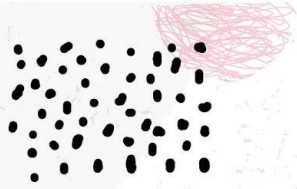


## Materials

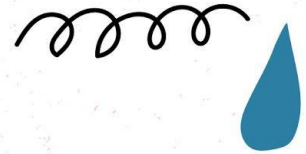
- 1) Clear File
- 2) Drawing pencil set
- 3) Paint brushes
- 4) Paint set (from booklist)
- 5) Container
- 6) Rag
- 7) Newspaper

What do I bring  
every lesson?

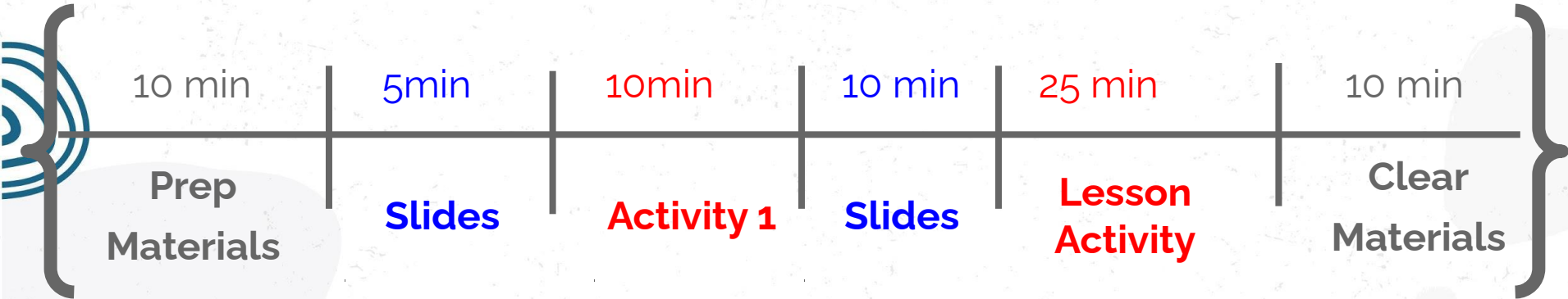




# Class Expectation



## Art Lesson

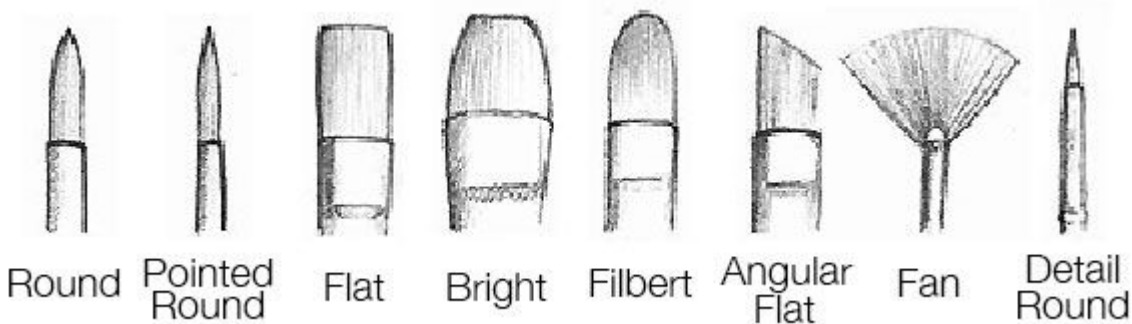


70 minutes





# Get to Know Your Paint Brush



## Anatomy of a paintbrush





# Get to Know Your Paint Brush



ROUND

## *Function:*

sketching, outlining, detailed work, creates thin to thick lines - thin at the tip, becoming wider the more its pressed down



FLAT

## *Function:*

bold strokes, washes, filling wide spaces, impasto. can use edge for fine lines, straight edges and stripes. long haired flat brushes are ideal for varnishing



POINTED  
ROUND

## *Function:*

fine details and lines, delicate areas, spotting and retouching.



DETAIL  
ROUND

## *Function:*

details and short strokes.



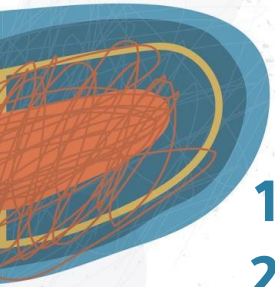
# Class Activity 1



1. Prepare your painting materials
2. Receive 1 A3 drawing paper
3. Write your name class and date at the top right hand corner of the paper.

NUR HALIMAH  
2M1  
18/01/2021

NUR HALIMAH  
2M1  
18/01/2021



# Creating Different Brushstrokes & Exploring Painting Technique

1. Smooth Blending

-2 colours

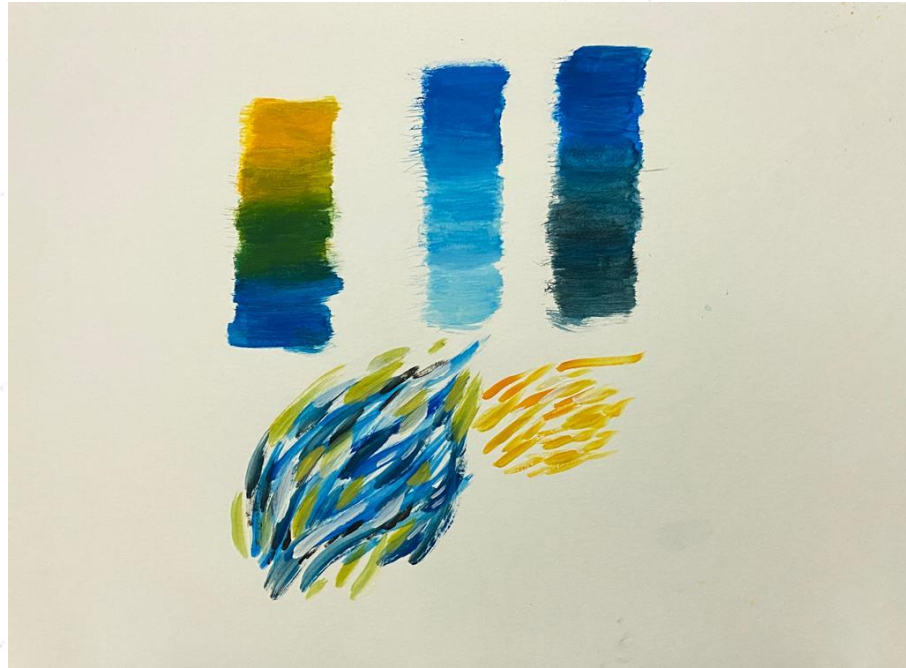
2. Shade

3. Tint

4. Short Stroke

5. Long Stroke

6. Layering



# Creating Different Brushstrokes & Exploring Painting Technique

## 1. Smooth Blending

-2 colours

## 2. Shade

## 3. Tint

## 4. Short Stroke

## 5. Long Stroke

## 6. Layering



Play video at  
faster speed





*ARTIST  
In  
FOCUS*

Artist that uses bold colours  
& famous for their brushstrokes



**Vincent  
Van Gogh**

# ART History Timeline



- Work has been found in tombs.
- Began with the invention of writing.
- Favored drawing over color.

15,000 BC  
Ancient Art



- This was also the age of Rubens, Rembrandt, Velázquez, and Vermeer.
- The movement was encouraged by the Catholic Church.
- Less complex, more realistic.

1600's  
Baroque



- Flat colors, Heavy outline, decorative quality.
- Based on Nature

1880-1920  
Post-Impressionism



- Pablo Picasso and Georges Braque
- Began in Paris
- Introduced B-D, used several points of view.

1908-1914  
Cubism



- Celebrated everyday objects, soup cans, coke bottles, comic strips, and washing powder.
- Direct descendant of Dadaism
- Bright solid colors, no variation.

1950-1960  
Pop Art

Renaissance  
1300's

- Began in Italy
- Time of economic growth
- Da Vinci, Michelangelo, and Raphael represented this era.



Impressionism  
1867-1886

- Distortion & Exaggeration
- Very Bright & Vibrant
- Captures images as if they were seen at a glance.



Expressionism  
1905-1925

- The use of distortion and exaggeration.
- Dance, Cinema, literature and theatre.



Dada  
1916-1920

- Emphasized unpredictability in art.
- Irreverence was key to their art work.



Op Art  
1960

- Seem to swell and vibrate.
- "Optical Art"
- Bridget Riley, Heinz Mack, & Victor Vasarley.



# Art History



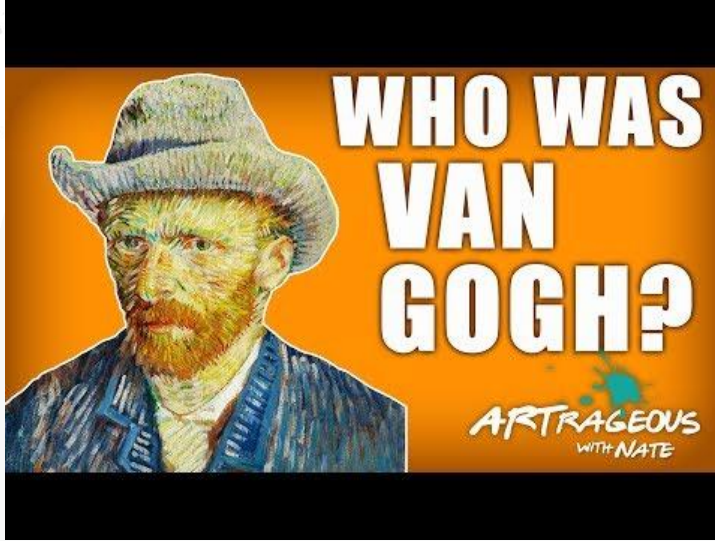
**Café Terrace at Night** is an 1888 oil painting  
Vincent Van Gogh

## Impressionism

1. A style of painting developed in the last third of the 19th century.
2. Characterized chiefly by short brush strokes of bright colors to represent the effect of light on objects.

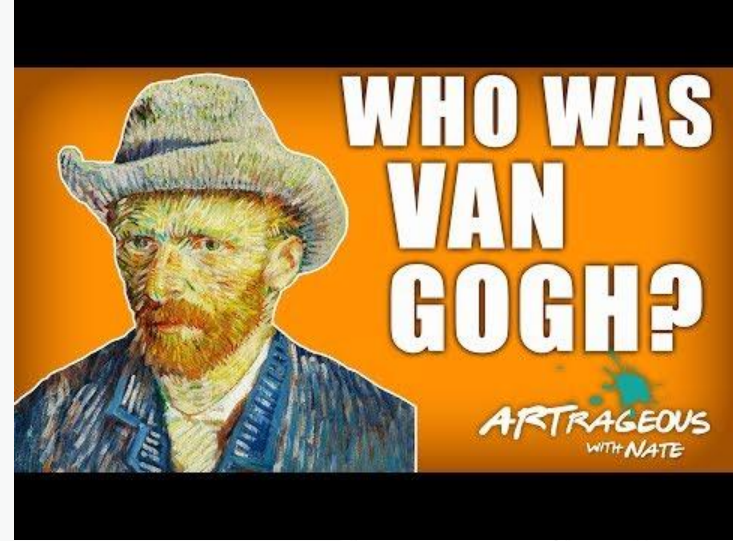
<https://artsandculture.google.com/story/MgXRyZg2YYUMXA>

# Art History- Who was Van Gogh



**1st video**

3:47 to 4:49



**2nd video**

5:36 to 6:23

# Fun Fact



Film titled 'Loving Vincent'

- Vincent Van Gogh is still an inspiration to many, and that includes the makers of 'Loving Vincent'.
- They created an animated movie based on paintings that already exist.



125 skilled painter at work during the production of the movie.

# Loving Vincent Sneak Peek

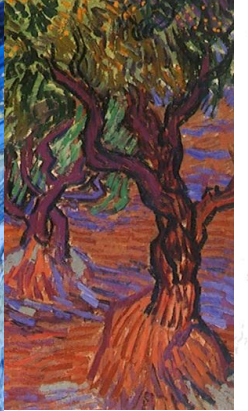
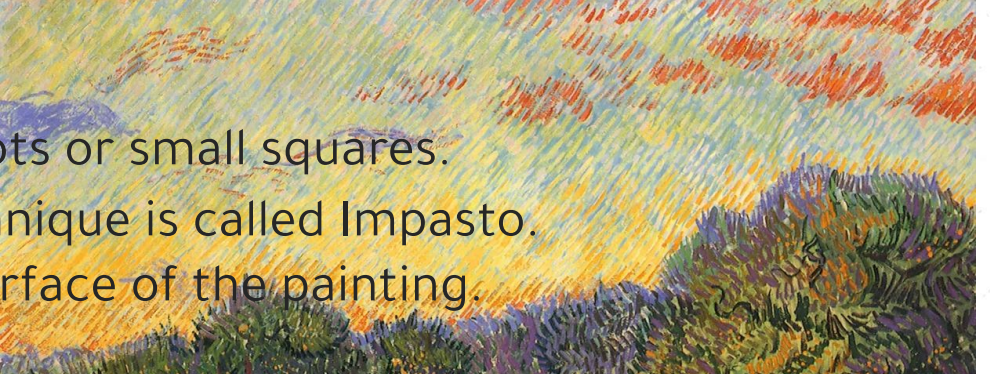


Play from 01:57 to 02:57

<https://www.youtube.com/watch?v=-o-mo747TnY>

# Characteristic of Van Gogh's work

vivid colours  
forming dots or small squares.  
nt. This technique is called Impasto.  
en on the surface of the painting.



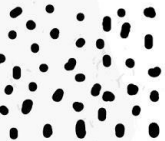
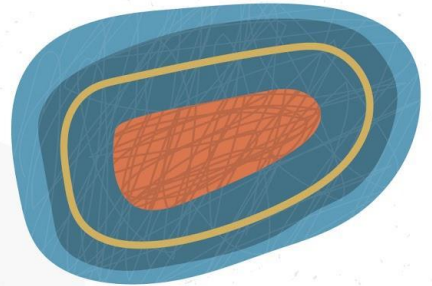




# Class Activity Instructions:

## Practicing Brush Strokes

1. Take one template from your teacher.
  2. Prepare your painting materials
  3. Refer to the reference image to complete the task
  4. Use this exercise as a practice before you attempt WA1 assignment next week.
- DO your utmost best for this exercise.
  - DO submit by the end of the lesson.



# Vincent Van Gogh

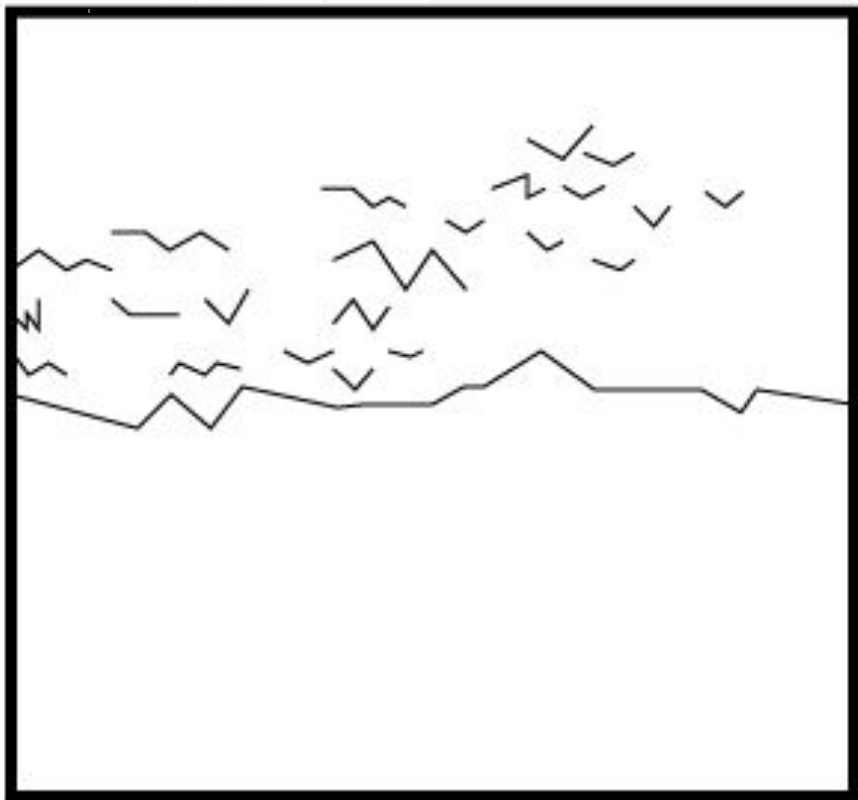


**Wheatfield with crows** is an 1890 oil painting  
Vincent Van Gogh



Vincent Van Gogh

# Class Activity



## Observation:

1. Include **LONG & SHORT strokes**
2. **TONAL VALUES** must be reflected.
3. **MIX COLOURS** and **avoid just using it straight from the tube.**
4. Use **DIFFERENT BRUSH SIZE** to include **DETAILS** to the art work.





Play video at x2 fast speed

## Key observation from the video:

- Work on the base colour first.
- Wait till the surface dries.
- Slowly incorporate your long and short strokes to mimic van gogh's brush strokes.
- Use the layering method we have thought u.

# Vincent Van Gogh

Did you know that this was Vincent Van Gogh's final artwork that he created.



**Wheatfield with crows** is an 1890 oil painting  
Vincent Van Gogh



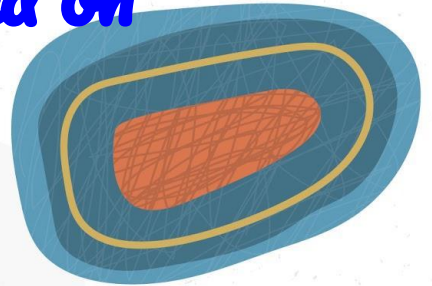
**Auvers Sur Oise, France**



## *Class Activity*

**Complete it by the end of the lesson. If you can't complete it on time, bring it home as homework.**

*Lesson materials will be uploaded on [cssart.weebly.com](https://cssart.weebly.com)*





# Ground Rules When Disposing Paint

- 1) Always ensure you do not have a lot of paint on your palette
- 2) Discard the paint in the Black Bin first.
- 3) Do not leave any residue of paint in the sink as it can get clogged.
- 4) Always ensure that the sink is clear from any paint residue or stains
- 5) You will be given 10 minutes to clean.