



Through School To Nation

CHANGKAT CHANGI SECONDARY SCHOOL
ART & DESIGN
TERM 1 WEEK 2
PRINCIPLES OF DESIGN

Section A: Theory	12
Section B: Practical	13
Total	25

NAME: _____ () CLASS: _____ DATE: _____

Note: This mark is included in the CA1

Parent's or Guardian's Signature

Section A: Theory (12 marks)

Read the questions carefully. Write down the answers in the spaces provided below.

1) Defining: What does the acronym POD stand for? (1m)

2) Understanding: What is the purpose of learning POD ? (1m)

3) Identifying: What are the 3 different POD? (3m)

4) Defining: What does **Emphasis** refer to? (1m)

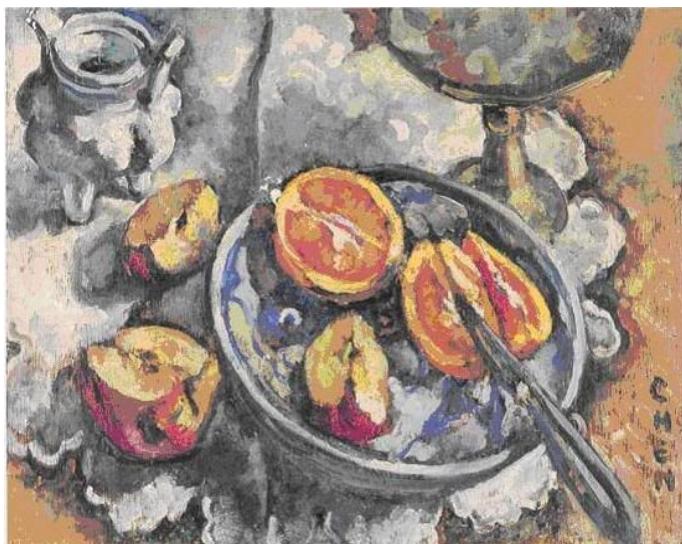
5) Applying: How do you show **Emphasis** in your work? (2m)

(a) _____

(b) _____

(c) _____

(d) _____



This is an example of an artwork done using oil painting technique in the Nanyang style. You can see that the artist used Emphasis for her composition with regard to the choice of colours.

Artist: Georgette Chen

POD: Emphasis

Source:

<http://eresources.nlb.gov.sg/pictures/Details/f91b73d8-cbec-4f41-9004-18f0db3af4fd>

6) Defining: What does **Symmetry** refer to? (1m)

7) Applying: How do you show **Symmetry** in your work? (1m)



This is an example of an artwork done using the woodblock print method. You can see that the artist use **Symmetry** for his composition.

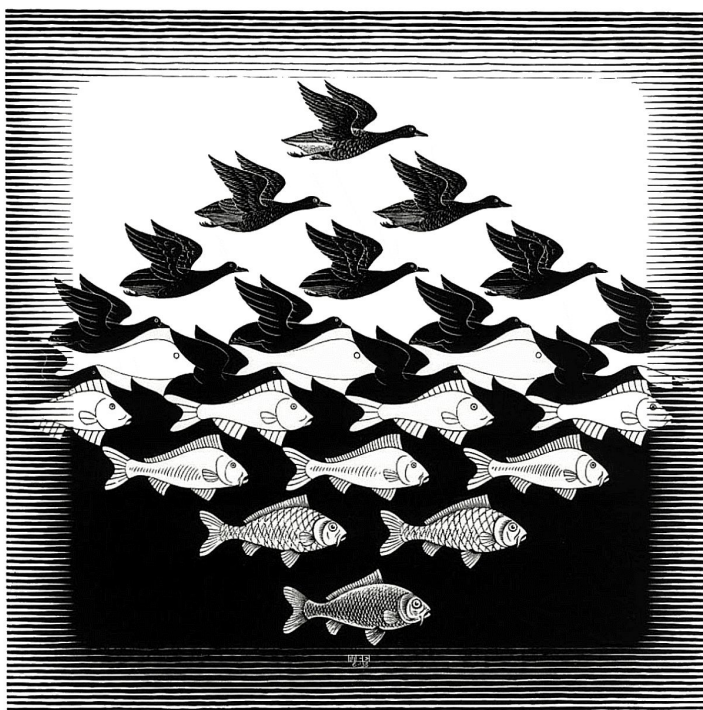
Artist: Chua Mia Tee
POD: **Symmetry**
Source: <http://tinyurl.com/jjoerf5>

8) Defining: What does **Movement** refer to? (1m)

9) Applying: How do you show **Movement** in your work? (1m)

(a) _____

(b) _____



Emcee Escher's work shows movement by using lines. Notice that the weight of lines are different!


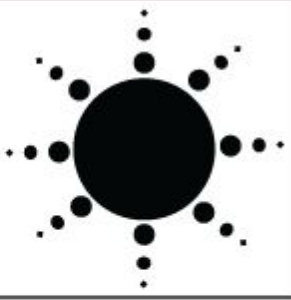
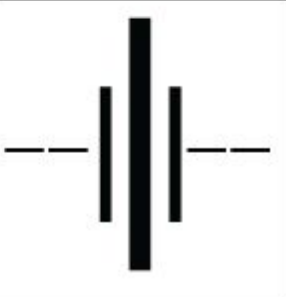
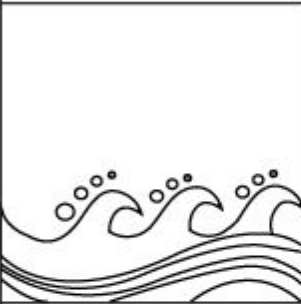

Sky and Water I by MC Escher
Year: 1938
POD: **Movement**
Source: <https://uploads5.wikiart.org/images/m-c-escher/sky-and-water-i.jpg>

Section B: Practical (13 marks)

Fill in the spaces below with the specific Principles of Design. Use a pencil.

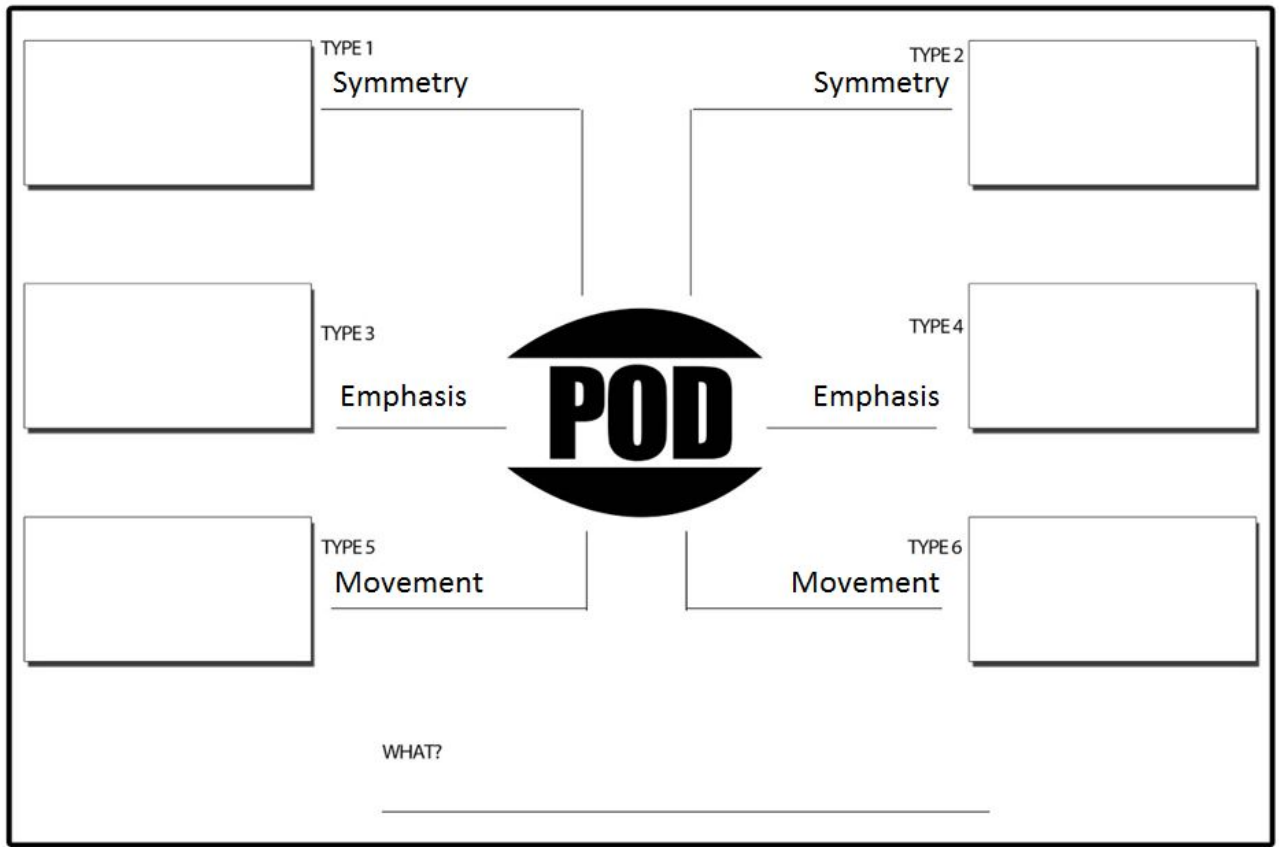
10) In the diagram [Di. 1] below, create an artwork in each blank space using the given EOA and POD.
You can refer to the examples shown in the table. (7m)

[Di. 1]

	SYMMETRY	MOVEMENT	EMPHASIS
DOTS			
LINES			
SHAPES			
TEXTURE			

11) In the diagram [Di. 2] below, create an artwork in each blank space with the 3 PODs; **Symmetry**, **Emphasis**, **Movement**. Use a variety of EOA to illustrate your ideas. (6m)

[Di. 2]



NOTE: For your CA1 next week, please bring the following items:

- Sharpener
- Eraser
- Full range of pencils
- Drawing pens
- Colour pencils
- Markers

Ensure all your pencils and colour pencils are sharpened.

-End-